



EPL SERIES - EPL-W

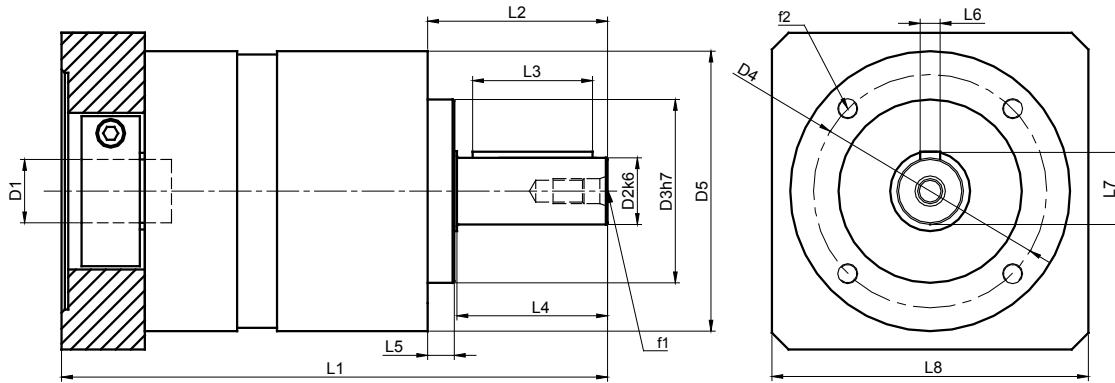


EPL-W Series		50	64	84	118	150	
Stock Ratios		3, 5, 7, 10, 25, 50, 100 (Standard Input)					N/A
All Ratios Available		1-stage: 3, 4, 5, 7, 10 2-stage: 12, 16, 20, 25, 35, 40, 50, 70, 100 3-stage: 120, 160, 200, 250, 350, 490, 700, 1000 (Consult GAM for other ratios)					
Nominal Output Torque (T_{2n})	Nm (lb-in)	3:1	5 (44)	20 (177)	40 (354)	100 (885)	230 (2036)
		4, 5, 7:1	6.5 (58)	26 (230)	54 (478)	120 (1062)	310 (2744)
		10, 100, 1000:1	5 (44)	16 (142)	40 (354)	105 (929)	180 (1593)
		12:1	14 (124)	36 (319)	80 (708)	170 (1505)	272 (2407)
		all other ratios	16 (142)	42 (372)	100 (885)	210 (1859)	340 (3009)
Max Acceleration Output Torque (T_{2B})	Nm (lb-in)	3:1	10 (89)	36 (319)	70 (620)	180 (1593)	360 (3186)
		4, 5, 7:1	13 (115)	44 (389)	100 (885)	200 (1770)	460 (4071)
		10, 100, 1000:1	10 (89)	24 (212)	75 (664)	180 (1593)	340 (3009)
		12:1	17.5 (155)	45 (398)	100 (885)	215 (1903)	360 (3186)
		all other ratios	20 (177)	52 (460)	125 (1106)	255 (2257)	460 (4071)
Emergency Output Torque (T_{2not})	Nm (lb-in)	3:1	20 (177)	72 (637)	160 (1416)	200 (1770)	860 (7612)
		4, 5, 7:1	26 (230)	84 (743)	216 (1912)	480 (4248)	1000 (8851)
		10, 100, 1000:1	20 (177)	62 (549)	160 (1416)	410 (3629)	800 (7081)
		12:1	28 (248)	72 (637)	160 (1416)	400 (3540)	860 (7612)
		all other ratios	32 (283)	84 (743)	216 (1912)	480 (4248)	1000 (8851)
Nominal Speed (n_1)	RPM	-	3500	3500	3000	2500	2500
Max Speed (n_{1max})	RPM	-	6000	6000	6000	5000	4500
Standard Output Backlash* (j)	arcmin	1-stage	<16	<10	<10	<8	<8
		2-stage	<20	<14	<14	<12	<12
		3-stage	-	<18	<18	<16	<16
Allowable Radial Load (F_{rad}) 1	N (lbs)	-	650 (146)	1900 (428)	2800 (630)	5000 (1125)	7500 (1688)
Allowable Axial Load (F_{axial})	N (lbs)	-	700 (158)	1500 (338)	2500 (563)	4500 (1013)	6000 (1350)
Torsional Stiffness* (C_{221})	Nm/arcmin (lb-in/arcmin)	10,100,1000	0.60 (5.3)	1.3 (11.5)	3.4 (30.1)	8.3 (73.5)	22 (194.7)
		7,70,700	0.78 (6.9)	1.7 (15)	4.8 (42.5)	13.6 (120.4)	27 (239)
		all other ratios	0.90 (8.0)	2.4 (21.2)	7.1 (62.8)	17.2 (152.2)	33 (292.1)
Weight (m)	kg (lbs)	1-stage	0.4 (0.9)	1.0 (2.2)	2.3 (5.1)	5.8 (12.8)	10.0 (22.1)
		2-stage	0.5 (1.1)	1.3 (2.9)	3.1 (6.8)	7.9 (17.4)	12.5 (27.6)
		3-stage	-	1.6 (3.5)	3.9 (8.6)	10.0 (22.1)	15.0 (33.1)
Noise Level (L_{pk})	dB(A)	-	<64	<66	<68	<70	<72
Mass Moment of Inertia (J_1)	kg cm ² (lb-in ²)	3:1	0.06 (0.021)	0.45 (0.154)	1.37 (0.468)	6.54 (2.235)	12.23 (4.179)
		4:1, 12:1, 16:1	0.04 (0.014)	0.38 (0.130)	1.14 (0.390)	4.8 (1.640)	7.65 (2.614)
		5:1, 20:1, 25:1	0.04 (0.014)	0.36 (0.123)	1.05 (0.359)	4.05 (1.384)	6.24 (2.132)
		7:1, 35:1	0.04 (0.014)	0.35 (0.120)	0.97 (0.331)	3.4 (1.162)	4.7 (1.606)
		10:1, 40:1 - 100:1	0.04 (0.014)	0.34 (0.116)	0.93 (0.318)	3.1 (1.059)	3.8 (1.299)
		120:1 - 1000:1	(0.000)	0.34 (0.116)	0.93 (0.318)	3.12 (1.066)	3.9 (1.333)
Efficiency at Load	1-stage: 94% 2-stage: 92% 3-stage: 90%						
Service Life	> 30,000 hours						
Lubrication	Mineral Grease EP0						
Protection Rating	IP 64						
Operating Temperature Range	-20°C to 90°C						

1) Load applied at center of output shaft @100 RPM

* See page 224 for definitions

EPL-W



EPL-W Series		50		64		84		118		150	
		mm	(in)	mm	(in)	mm	(in)	mm	(in)	mm	(in)
D1 _{max standard} *	motor shaft diameter	11	(0.433)	14	(0.551)	19	(0.748)	24	(0.945)	28	(1.102)
D1 _{max available} *	motor shaft diameter	14	(0.551)	16	(0.63)	24	(0.945)	32	(1.26)	38	(1.496)
D2 k6	output shaft diameter	12	(0.472)	14	(0.551)	20	(0.787)	25	(0.984)	40	(1.575)
D3 h7	pilot diameter	35	(1.378)	40	(1.575)	55	(2.165)	80	(3.15)	110	(4.331)
D4	bolt circle	44	(1.732)	52	(2.047)	70	(2.756)	100	(3.937)	130	(5.118)
D5	housing diameter	50	(1.969)	64	(2.52)	84	(3.307)	118	(4.646)	150	(5.906)
f1	shaft thread	M4x8		M5x12		M6x16		M10x22		M10x30	
f2	mounting holes	M4x6		M5x12		M6x14		M8x18		M10x20	
L1 1-stage**	gearbox total length	93 (3.661)		117 (4.606)		162 (6.378)		199 (7.835)		265 (10.433)	
L1 2-stage**		109 (4.291)		139 (5.472)		195 (7.677)		239 (9.409)		305 (12.008)	
L1 3-stage**		-		161 (6.339)		228 (8.976)		280 (11.024)		346 (13.622)	
L2	shaft length	24.5	(0.965)	39	(1.535)	54	(2.126)	61	(2.402)	81	(3.189)
L3	key length	16	(0.63)	25	(0.984)	36	(1.417)	45	(1.772)	60	(2.362)
L4	usable shaft length	18	(0.709)	30	(1.181)	45	(1.772)	50	(1.969)	70	(2.756)
L5	pilot height	4	(0.157)	8	(0.315)	8	(0.315)	10	(0.394)	10	(0.394)
L6	key width	4	(0.157)	5	(0.197)	6	(0.236)	8	(0.315)	12	(0.472)
L7	key height	13.5	(0.531)	16	(0.63)	22.5	(0.886)	28	(1.102)	43	(1.693)
L8**	adapter size	50	(1.969)	70	(2.756)	90	(3.543)	120	(4.724)	150	(5.906)

* for larger motor shaft diameters, please contact GAM ** depending on the motor, value can vary

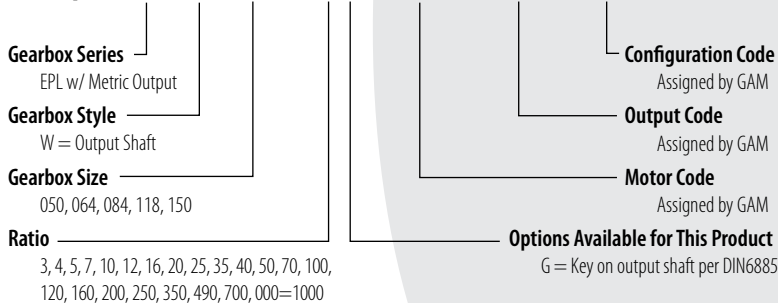


Recommended Output Coupling (if necessary)

	metal bellows	KLC-25	KLC-50	KLC-125	KM-270	KM-400
elastomer		EKM-45	EKM-60	EKM-150	EKM-300	EKM-400

TYPE CODES FOR EPL SERIES (EPL-W)

Example: EPL - W - 084 - 005 G - M0000 - H0000 - C0000



Tolerances (mm)		
Size	k6	h7
Over 10	+0.012	0
Thru 18	+0.001	-0.018
Over 18	+0.015	0
Thru 30	+0.002	-0.021
Over 30	+0.018	0
Thru 50	+0.002	-0.025
Over 50	+0.021	0
Thru 80	+0.002	-0.030
Over 80	+0.025	0
Thru 120	+0.003	-0.035